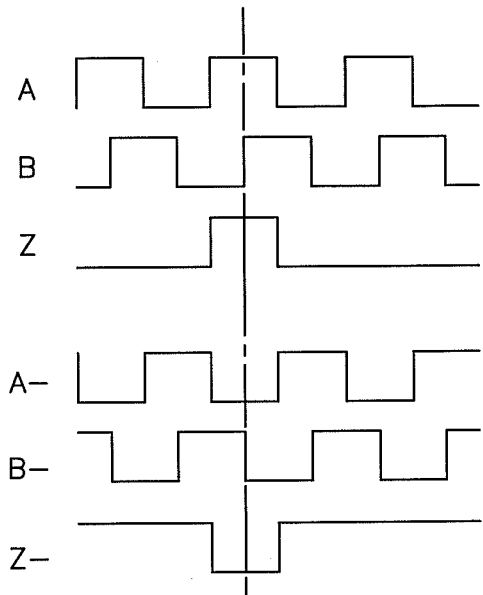


REVISIONS		
LTR	REVISION	DATE
D	ADDED SHEET FOR 41230	4/12/97
E	MOVED R5 LEADS, SHT 2	11/20/97
F	ADDED PCB TERM. COLUMN	12/8/97
G	41266 W/41230; CURRENT SENSE W/LIGHT	12/18/00
H	ADDED SHEET 3, 5V ONLY	9/12/02
J	ECO_520 (ADD 41278)	6/2/05
J1	ADD REF RED WIRE SHT 3	12/13/05
K	ECO_639 (SHT 2 PCB W/41265)	4/6/06

CONN. PIN	FUNCTION	WIRE COLOR	PCB TERM.
A	CHANNEL A	YEL	B-
B	CHANNEL B	BLU	A
C	CHANNEL Z	ORN	Z
D	+5-28VDC ELECTRONICS	RED	+V IN
E	+5 CURRENT SENSE	GRAY	SEE PG. 2 & 3
F	0V	BLK	0V
G	CASE GROUND	GREEN	CG
H	CHANNEL A-	WHT/YEL	B
I	CHANNEL B-	WHT/BLU	A-
J	CHANNEL Z-	WHT/ORN	Z-



CONNECTOR: MS3102R18-1P  
 WIRE: AWG 22 TEFLON INSULATED

NOTE:  
 1. NON STANDARD GATING IS OBTAINED BY SPECIAL WIRING OF CIRCUIT BOARD.

UNLESS OTHERWISE SPECIFIED DIMENSIONS ARE IN INCHES APPLY AFTER FINISH TOLERANCES ON .XX ±.01 .XXX ±.005 ANGLES ± 0° 30' REMOVE BURRS AND BREAK ALL SHARP EDGES .010 MAX ALL DIA. TO BE © WITHIN .010	DRAWN REDRAWN KRB <i>[Signature]</i> ENGR APPR	DATE 6/2/05	<b>BEI</b> INDUSTRIAL ENCODER DIVISION BEI TECHNOLOGIES, INC.			
			TITLE DEVIATION ORDER Z GATED WITH POSITIVE 1/2 CYCLE OF A SEPARATE LEAD AND RESISTOR FOR CURRENT SENSE			
			SIZE A	FSCM NO. 1RB90	DWG NO. DO-50360	REV. K
			SCALE NONE	FILE: DO_50360K.DWG	SHEET: 1/3	

THIS DOCUMENT CONTAINS PROPRIETARY INFORMATION OF BEI TECHNOLOGIES, INC. ANY REPRODUCTION, USE OR DISCLOSURE OF THIS DOCUMENT WITHOUT WRITTEN CONSENT OF BEI TECHNOLOGIES, INC. IS EXPRESSLY PROHIBITED.